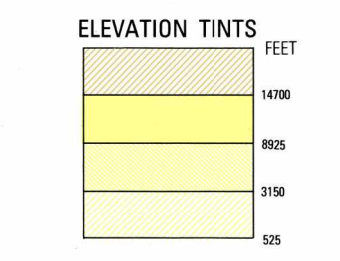


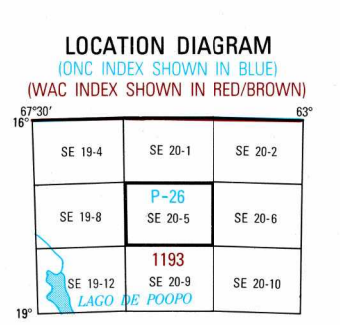
SERIES 1501 AIR SHEET SE 20-5 EDITION 1



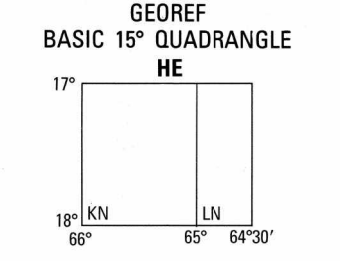
RELIABILITY OF THIS GRAPHIC Compiled from best available source materials.

Horizontal Datum: World Geodetic System 1984 Vertical Datum: Mean Sea Level Transverse Mercator Projection

Glossary table with symbols for geographical features like stream, hill, mountain, etc.



Conversion of elevations table with columns for feet and meters.

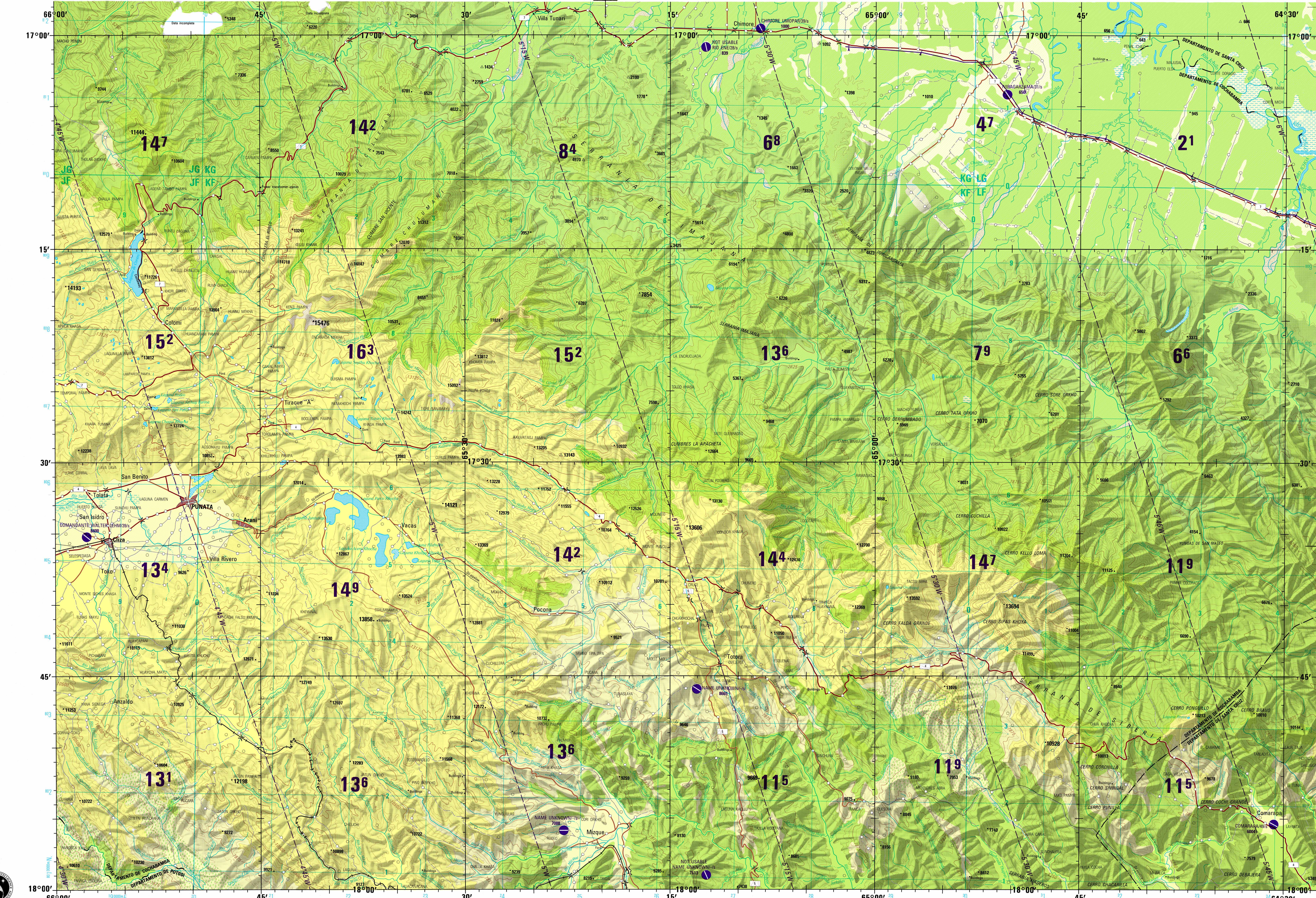


CAUTION AIR INFORMATION CURRENT THROUGH 12 MARCH 1993

Lines of equal magnetic variation for 1990

Vertical obstructions, including powerlines, have been extracted from the most available source.

SCALE 1:250,000 PUNATA, BOLIVIA SERIES 1501 AIR SHEET SE 20-5 EDITION 1



Prepared and published by the Defense Mapping Agency Hydrographic/Topographic Center, Bethesda, MD. Compiled April 1993.

Technical information including coordinate conversion, sample 1:000 meter reference, and designations for the zone of the guardiana.

ATTENTION THIS CHART CONTAINS MAXIMUM ELEVATION FIGURES (MEF)

ROADS-CAMINOS table with symbols and descriptions for various road types like 4 lanes dual, 4 lanes, etc.

JOINT OPERATIONS GRAPHIC (AIR)

Scale 1:250,000, contour interval approximately 525 feet, and equidistance approximation of curves of level.

RAILROADS-FERROCARRILES table with symbols for single track, multiple track, and other features.

ELEVATIONS IN FEET table with symbols for spot elevation, normal, and critical.

RADIO FACILITIES table with symbols for various radio types like RNS, RUDN, etc.

NOTES-NOTES section with additional information and a copyright notice for 1993.