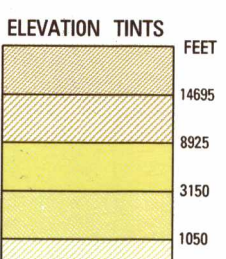


SERIES 1501 AIR SHEET SE 19-4 EDITION 1



RELIABILITY OF THIS GRAPHIC (as determined by standard practices)

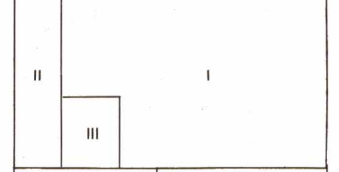
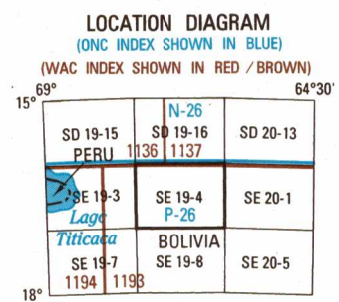
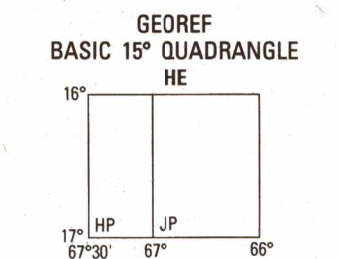


Table with columns: GRAPHIC FEATURE, DATE OF INFORMATION, AREA I, AREA II, AREA III. Rows include 'All features' and 'Horizontal Datum: World Geodetic System 1984'.

GLOSSARY GLOSARIO table with columns for feature names in English and Spanish, such as 'Comunidad', 'Condición', 'Datos insuficientes'.



CONVERSION OF ELEVATIONS table with columns for FEET and METERS, showing conversion factors for various elevation values.



CAUTION AIR INFORMATION CURRENT THROUGH 22 MARCH 1994. Contains NOTAMS and Flight Information Publications for the latest information.

LINES OF EQUAL MAGNETIC VARIATION FOR 1990. (Annual rate of change: 11' increase). LÍNEAS DE DECLINACIÓN MAGNÉTICA IGUAL PARA EL AÑO 1990.

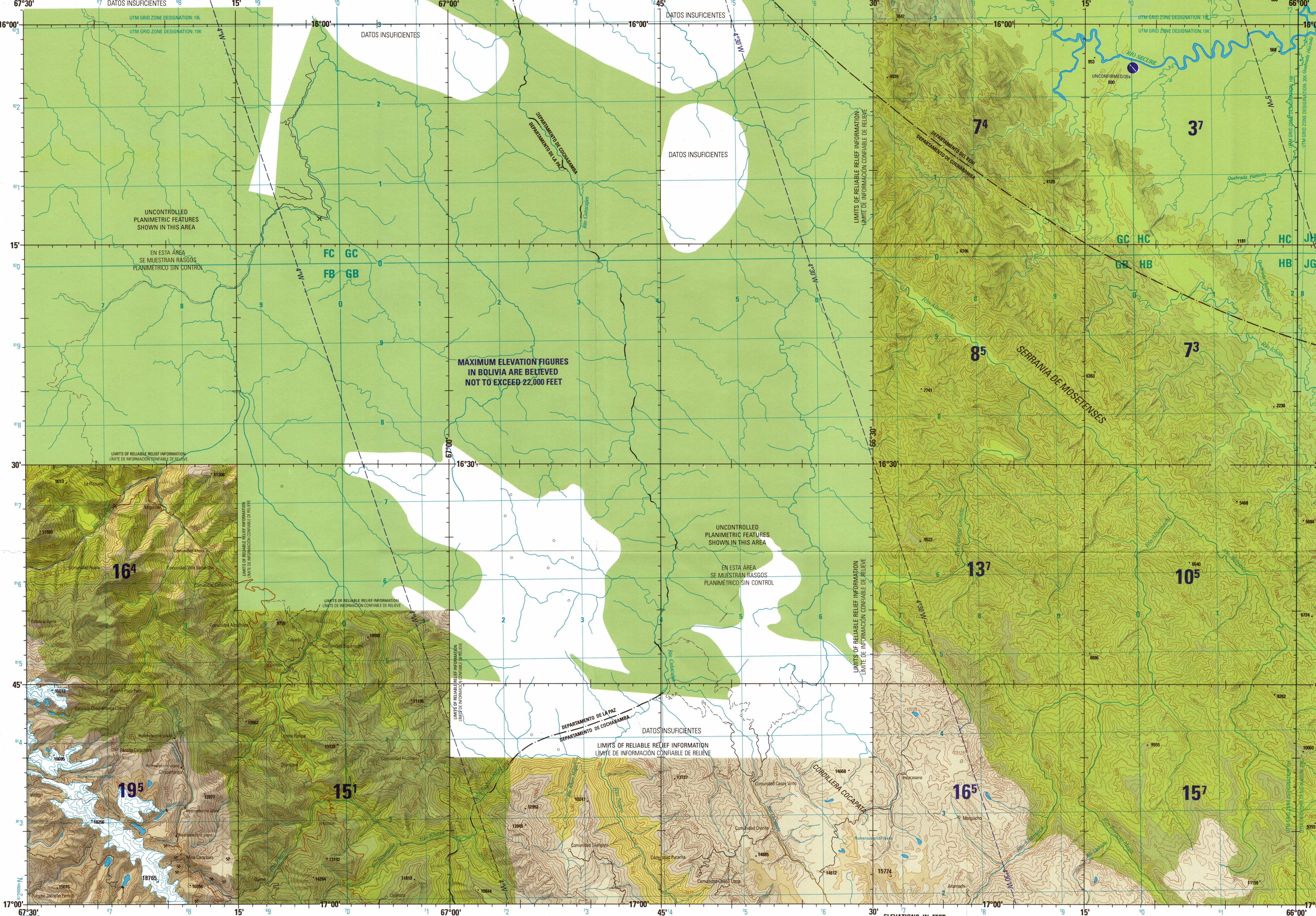
CAUTION Vertical obstructions, including powerlines, have been extracted from the most reliable sources available.

ATTENTION THIS CHART CONTAINS MAXIMUM ELEVATION FIGURES (MEFs). The Maximum Elevation Figures shown in quadrangles are based on the highest known elevation of any terrain feature.

LIMITED DISTRIBUTION Distribution restricted to DoD, IAW 48 CFR 101-11.6. Release authorized to U.S. 3rd contractors, IAW 48 CFR 101-11.6, 101-11.7, 101-11.8, 101-11.9, 101-11.10, 101-11.11, 101-11.12, 101-11.13, 101-11.14, 101-11.15, 101-11.16, 101-11.17, 101-11.18, 101-11.19, 101-11.20, 101-11.21, 101-11.22, 101-11.23, 101-11.24, 101-11.25, 101-11.26, 101-11.27, 101-11.28, 101-11.29, 101-11.30, 101-11.31, 101-11.32, 101-11.33, 101-11.34, 101-11.35, 101-11.36, 101-11.37, 101-11.38, 101-11.39, 101-11.40, 101-11.41, 101-11.42, 101-11.43, 101-11.44, 101-11.45, 101-11.46, 101-11.47, 101-11.48, 101-11.49, 101-11.50, 101-11.51, 101-11.52, 101-11.53, 101-11.54, 101-11.55, 101-11.56, 101-11.57, 101-11.58, 101-11.59, 101-11.60, 101-11.61, 101-11.62, 101-11.63, 101-11.64, 101-11.65, 101-11.66, 101-11.67, 101-11.68, 101-11.69, 101-11.70, 101-11.71, 101-11.72, 101-11.73, 101-11.74, 101-11.75, 101-11.76, 101-11.77, 101-11.78, 101-11.79, 101-11.80, 101-11.81, 101-11.82, 101-11.83, 101-11.84, 101-11.85, 101-11.86, 101-11.87, 101-11.88, 101-11.89, 101-11.90, 101-11.91, 101-11.92, 101-11.93, 101-11.94, 101-11.95, 101-11.96, 101-11.97, 101-11.98, 101-11.99, 101-11.100.

SCALE 1:250,000 INQUISIVI, BOLIVIA

SERIES 1501 AIR SHEET SE 19-4 EDITION 1



Prepared and published by the Defense Mapping Agency Hydrographic/Topographic Center, Bethesda MD. Includes COORDINATE CONVERSION TABLES and a SAMPLE 1000 METER REFERENCE diagram.

POPULATED PLACES-LUGARES POBLADOS... LA PAZ COCHABAMBA Uyuni Atocha Cochabani. Includes ROADS-CARRETERAS, RAILROADS-FERROCARRILES, and BOUNDARIES-LÍMITES.

JOINT OPERATIONS GRAPHIC (AIR) SCALE 1:250,000. Includes CONTOUR INTERVAL APPROXIMATELY 525 FEET and VEGETATION-VEGETACIÓN legend.

VEGETATION-VEGETACIÓN, HYDROGRAPHY-HIDROGRAFÍA, AERODROMES (Military or Civil), RADIO AIDS TO NAVIGATION, and TERRAIN ELEVATIONS-ALTITUDES DEL TERRENO.

RADIO FACILITIES-FACILIDADES DE RADIO, VISUAL AIDS AND OBSTRUCTIONS, and TERRAIN ELEVATIONS-ALTITUDES DEL TERRENO. Includes a legend for radio facilities and visual aids.