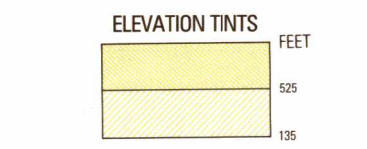
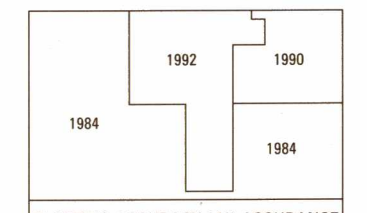


SERIES 1501 AIR SHEET SD 19-8 EDITION 1

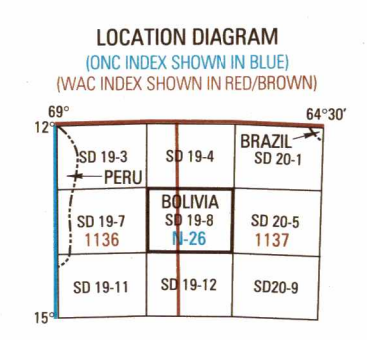


RELIABILITY OF THIS GRAPHIC (as determined by standard practices)



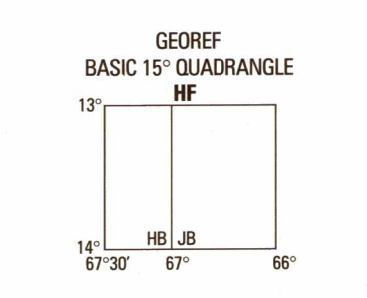
PLOTTING ACCURACY 90% ASSURANCE
Horizontal within 820 feet
Contours within 135 feet
GRAPHIC FEATURE DATE OF INFORMATION
ALL FEATURES See Diagram
Horizontal Datum: World Geodetic System
Vertical Datum: Mean Sea Level
Transverse Mercator Projection

GLOSSARY
Arroyo stream
Comunidad farm, populated place
Departamento first-order administrative division
Estancia populated place, ranch
Laguna lake
Quadrado stream
Rio stream



CONVERSION OF ELEVATIONS

FEET	METERS	FEET	METERS
1000	305	10000	3048
900	274	9000	2743
800	244	8000	2438
700	213	7000	2134
600	183	6000	1829
500	152	5000	1524
400	122	4000	1219
300	91	3000	914
200	61	2000	610
150	46	1500	457
100	31	1000	305



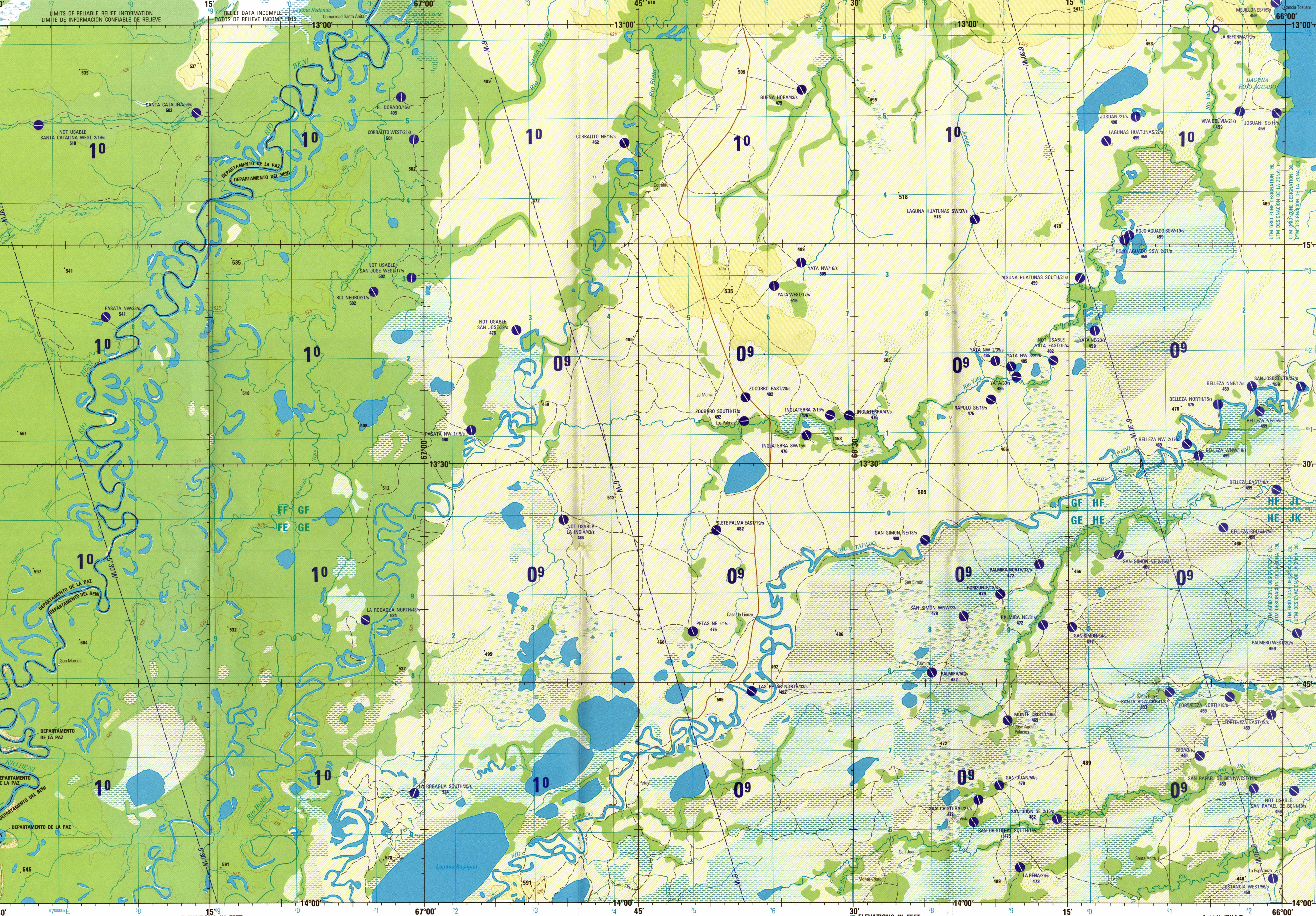
CAUTION
AIR INFORMATION CURRENT THROUGH 31 MAY 1996
Caution: Notations and High Information Publications for the latest information, the 500 Aeronautical Chart Operating Manual or 400 D.C. Aeronautical Chart Amendment Document, for other chart system information.

LINE OF EQUAL MAGNETIC VARIATION FOR 1995
(Annual rate of change, 11' increase)
LINEAS DE IGUAL VARIACION MAGNETICA PARA 1995
(Indica anual de variacion, aumenta 11')

CAUTION
Vertical obstructions, including powerlines, have been extracted from this map; reliable source available. However, there is no assurance that all are shown, or that their locations or heights are exact.

LIMITED DISTRIBUTION (Distribution authorized to DOD, NSA, and CIA, except as noted. Release authorized to U.S. DOD customers, NSA, and CIA, except as noted. Refer other requests to Headquarters, NIMA, ATTN: Distribution Officer, Dept. 725, Dayton, OH 45460-0205. Removal of this caveat is prohibited.)

SCALE: 1:250,000
LAS PETAS, BOLIVIA
SERIES 1501 AIR SHEET SD 19-8 EDITION 1

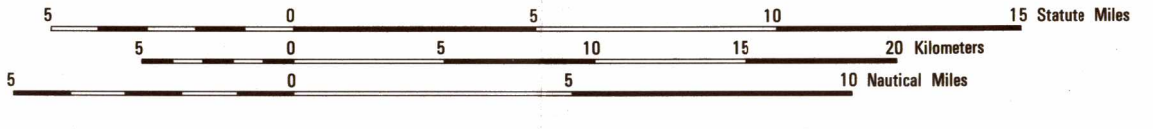


Prepared and published by the Defense Mapping Agency. Compiled March 1995.

ELEVATIONS IN FEET
ELEVACIONES EN PIES

JOINT OPERATIONS GRAPHIC (AIR)

SCALE 1:250,000



CONTOUR INTERVAL APPROXIMATELY 135 FEET
EQUIDISTANCIA APROXIMADA DE LAS CURVAS DE NIVEL 135 PIES

BLUE NUMBERED LINES INDICATE THE 10,000 METERS TRANSVERSE MERCATOR GRID, ZONE 18, WORLD GEODETIC SYSTEM ELLIPSOID.
LAS LINEAS AZULES NUMERADAS INDICAN LA CUADRICULA UTM DE 10,000 METROS, ZONA 18, ELIPSOIDE DEL SISTEMA GEODESICO MUNDIAL.

© COPYRIGHT 1996 BY THE UNITED STATES GOVERNMENT.
NO COPYRIGHT CLAIM UNDER TITLE 17 U.S.C.
© EL GOBIERNO DE LOS ESTADOS UNIDOS 1996
NO SE RECLAMAN DERECHOS DE AUTOR BAJO TITULO 17 U.S.C. (CODIGO DE LOS ESTADOS UNIDOS)

ROADS - CARRETERAS
All weather hard surface Superficie dura para todo clima
More than two lanes wide Mas de dos carriles de ancho
Two lanes wide Dos carriles de ancho
All weather, loose or light surface Superficie ligera o suelta para todo clima
Two lanes wide Dos carriles de ancho
One lane wide Un carril de ancho
Fair or dry weather, loose surface Saca o buen clima, superficie suelta
Cart track Camino para carreta
Route marker Marcador de ruta

RAILROADS - FERROCARRILES
Normal gauge 1.0 m (3'3 3/4")
Estriada normal 1.0 m (3'3 3/4")

BOUNDARIES - LIMITES
International Internacional
First-order administrative division División administrativa de primer orden

VEGETATION - VEGETACION
Woods: Scattered trees Bosque: Árboles esparcidos

HYDROGRAPHY - HIDROGRAFIA
Land subject to inundation Terreno sujeto a inundación
Sand Area
Swamp, marsh Marisma, pantano

AERODROMES (Military or Civil)
AERODROMOS (Militares o Civiles)
Runway pattern known Patrón de pista de aterrizaje conocido
EDNA-Name Nombre
50-Length of longest runway in nearest hundreds of feet Longitud de la pista más larga a las centenas de pies más próximas
Soft or unimproved surface Superficie suave o no mejorada
Unknown surface Superficie desconocida
728-Elevation Altitud
Runway pattern unknown Patrón de pista de aterrizaje desconocido

VISUAL AIDS AND OBSTRUCTIONS
AUXILIOS VISUALES Y OBSTRUCCIONES
Obstruction Obstrucción
1100-Elevation of obstruction top, above sea level Altitud de obstrucción punta, sobre el nivel del mar
(250)-Elevation of obstruction top, above ground level Altitud de obstrucción punta, sobre el nivel del suelo
Group obstruction Grupo de obstrucciones
Radio facility obstruction Obstrucción de facilidades de radio
Power transmission line Línea de alta tensión

TERRAIN ELEVATIONS-ELEVACIONES DEL TERRENO
Spot elevation normal; critical Cota: normal; crítica *446 *840
HIGHEST elevation is UNKNOWN
Elevación más alta DESCONOCIDA

ATTENTION
THIS CHART CONTAINS MAXIMUM ELEVATION FIGURES (MEF)
The Maximum Elevation Figures shown in this chart are represented by ticked lines of latitude and longitude and are based on information available concerning the highest known features in each quadrangle, including terrain and obstructions (trees, towers, antennas, etc.).
EXAMPLE: 1200 feet.
125

NOTES-NOTAS
Powerlines are shown except within populated place tints. Other obstructions are shown if they are 200 feet or more above ground level. See caution note.
Se muestran líneas de alta tensión con la excepción de dentro de las áreas en tinta que representan lugares poblados. Se muestran otras obstrucciones si están a 200 pies o más sobre el nivel del terreno. Ver Advertencia.
On this graphic a lane is generally considered as being 8 feet (2.5 meters) in width. En este gráfico se considera que una vía tenga 8 pies (2.5 metros) de ancho.

BOUNDARY REPRESENTATION IS NOT NECESSARILY AUTHENTIC
LA REPRESENTACION DE LIMITES NO DEBE CONSIDERARSE OFICIAL
A REPRESENTAÇÃO DE LIMITES NÃO É NECESSARIAMENTE OFICIAL
NSN 7641014227344
NIMA REF. NO. 1501ASD1908
ED. NO. 001