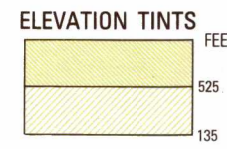
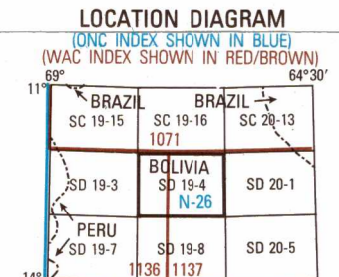


SERIES 1501 AIR SHEET SD 19-4 EDITION 1



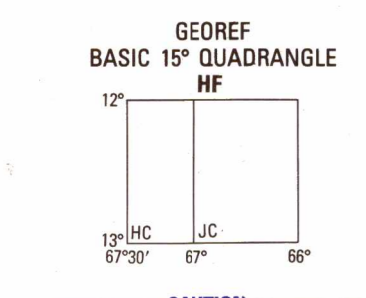
RELIABILITY OF THIS GRAPHIC
Compiled from best available source materials.
Horizontal Datum: World Geodetic System
Vertical Datum: Mean Sea Level
Transverse Mercator Projection

GLOSSARY
Abandoned: .. .
Arroyo: .. .
Barraca: .. .
Centro gomero: .. .
Centro gomero castaifero: .. .
Comunidad: .. .
Departamento: .. .
Estancia: .. .
Laguna: .. .
Quebrada: .. .
Rio: .. .
Vado: .. .



CONVERSION OF ELEVATIONS

FEET	METERS	FEET	METERS
1000	305	10000	3048
900	274	9000	2743
800	244	8000	2438
700	213	7000	2134
600	183	6000	1829
500	152	5000	1524
400	122	4000	1219
300	91	3000	914
200	61	2000	610
100	31	1000	305
100	31	1000	305



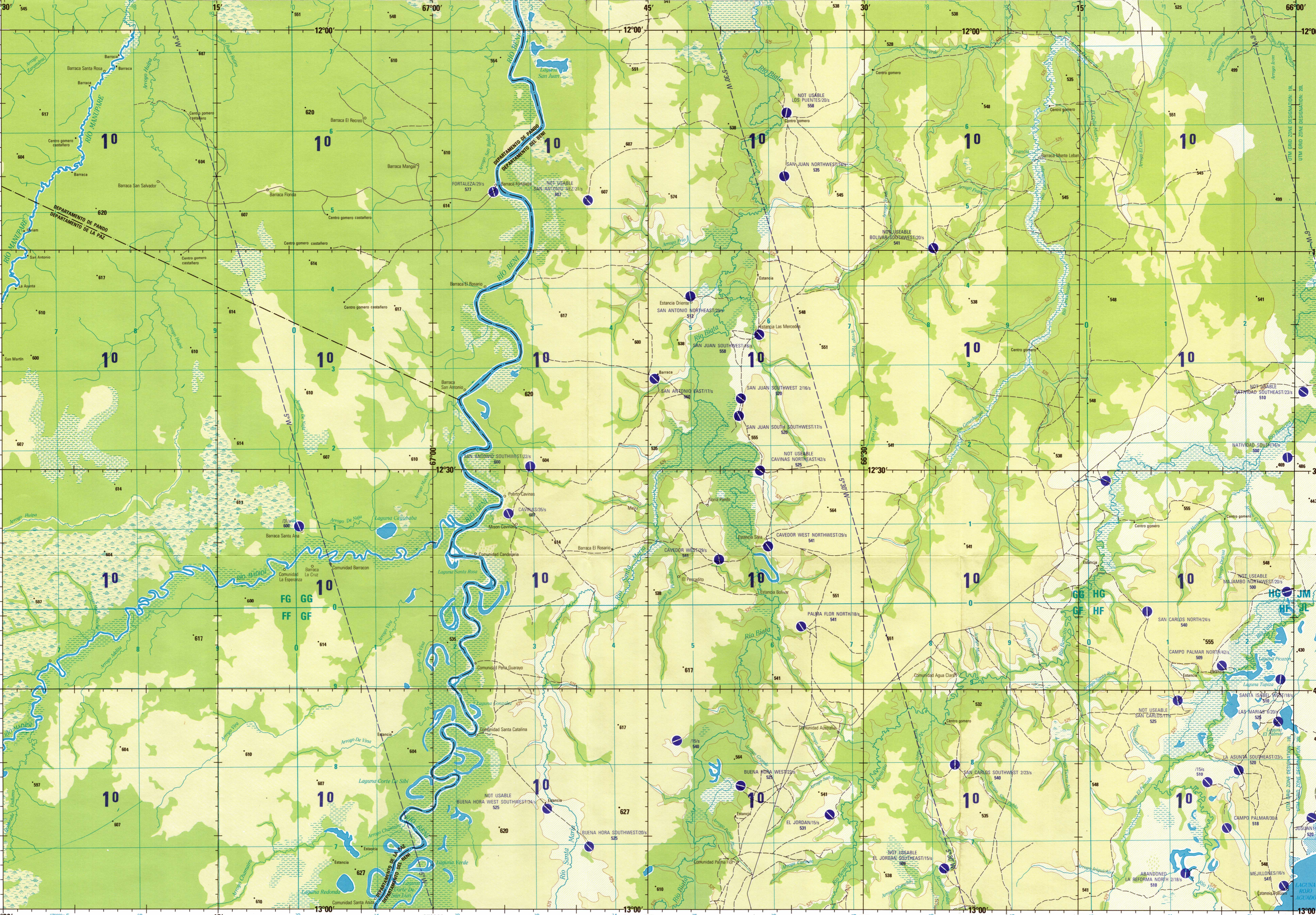
CAUTION
AIR INFORMATION CURRENT THROUGH 15 JULY 1993
Consult NOTAMS and Flight Information Publications for the latest information. The 2000 Aeronautical Chart Publishing Manual or MDG (UK) Aeronautical Chart Amendment document, for other chart revision information.

CAUTION
Vertical obstructions, including powerlines, have been extracted from the most reliable sources available. However, there is no assurance that all are shown, or that their locations or heights are exact.

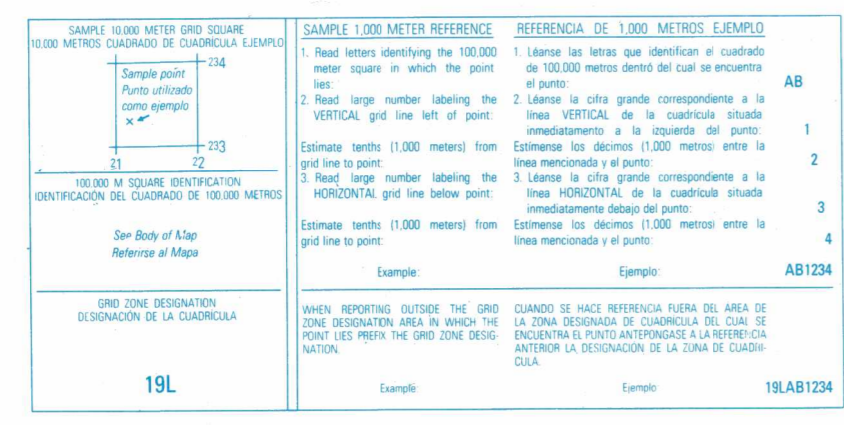
LIMITED DISTRIBUTION
Distribution authorized to DOD, IAW 10 USC 552(a)(4). Release authorized to DOD contractors, IAW 48 CFR 125.2(a)(2)(4). No other release to Headquarters, NIMA, ATTN: Release Officer, Dept. 25, Geospatial Information Center, 1215 Jefferson Davis Highway, Arlington, VA 22202-4302.

SCALE 1:250,000
BARRACA FORTALEZA, BOLIVIA

SERIES 1501 AIR SHEET SD 19-4 EDITION 1



Prepared and published by the Defense Mapping Agency, Hydrographic/Topographic Center, Bethesda, MD. Compiled in July 1993.

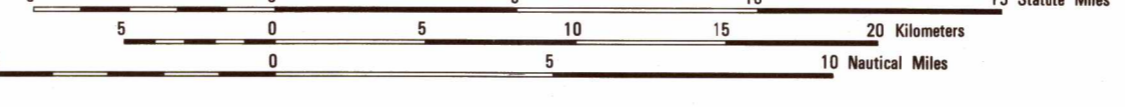


ELEVATIONS IN FEET / ELEVACIONES EN PIES

- ROADS - CARRETERAS: All weather hard surface, More than two lanes wide, Two lanes wide, All weather, loose or light surface, More than two lanes wide, Two lanes wide, Fair or dry weather, loose surface, Secco o buen clima, superficie suelta, Cart track, Camino para carritas, Route marker, Marcador de ruta.
- RAILROADS - FERROCARRILES: Normal gauge 1.44m (4'8 1/2"), Extra normal 1.44m (4'8 1/2").
- BOUNDARIES - LIMITES: International, First-order administrative division, District administrative or former order.
- VEGETATION - VEGETACION: Woods, Scattered trees, Bosque; Árboles esparcidos.
- HYDROGRAPHY - HIDROGRAFIA: Swamp, Land subject to inundation, Marisma; Terreno sujeto a inundacion.

JOINT OPERATIONS GRAPHIC (AIR)

SCALE 1:250,000



CONTOUR INTERVAL APPROXIMATELY 135 FEET
CURVAS DE NIVEL 135 PIES APROXIMADAS

BLUE NUMBERED LINES INDICATE THE 1000 METER UNIVERSAL TRANSVERSE MERCATOR GRID, ZONE 18 Q WORLD GEODETIC SYSTEM ELLIPSOID. LAS LINEAS AZULES NUMERADAS INDICAN LA CUADRICULA UTM DE 1000 METROS, ZONA 18 Q, ZONE 18 Q SISTEMA GEODETICO MONDIAL.

USERS SHOULD REFER CONNECTIONS, ADDITIONS, AND COMMENTS TO THE NIMA CUSTOMER HELP DESK: 1-800-455-0899; COMMERCIAL: 314-200-5032; OR 480-5032; OR WRITE TO: DIRECTOR, NATIONAL IMAGERY AND MAPPING AGENCY, ATTN: CDD, MAIL STOP P-37, 4800 SANGAMORE ROAD, BETHESDA, MD 20816-5003.

© COPYRIGHT 1993 BY THE UNITED STATES GOVERNMENT
NO COPYRIGHT CLAIMED UNDER TITLE 17 U.S.C.
© EL GOBIERNO DE LOS ESTADOS UNIDOS, 1993.
NO SE RECLAMAN LOS DERECHOS DE AUTOR BAJO TITULO 17 U.S.C. (COPIRO DE LOS ESTADOS UNIDOS).

AERODROMES (Military or Civil) / AERODROMOS (Militares o Civiles)

- Runway pattern known, EDNA-Name, Nombre, 50-Length of longest runway to nearest hundreds of feet, Longitud de la pista más larga a las centenas de pies más próximas, s-Soft or unimproved surface, Superficie suelta o no mejorada, u-Unimproved surface, Superficie desconocida, 725-Elevation, Altitud, Runway pattern unknown, Diseño de pista de aterrizaje desconocido.
- VISUAL AIDS AND OBSTRUCTIONS: 1033-Obstruction, Obstrucción, 1033-Elevation of obstruction top, above sea level, Altitud de obstrucción punta, sobre el nivel de mar, (350)-Elevation of obstruction top, above ground level, Altitud de obstrucción punta, sobre el nivel del suelo, Radio facility obstruction, Obstrucción de facilidades de radio, Power transmission line, Línea de alta tensión.

TERRAIN ELEVATIONS-ALTITUDES DEL TERRENO

- Spot elevation: Normal, Critical, Altitud de un punto: Normal, Crítica, 644-840, HIGHEST KNOWN elevation is 627 feet at the following coordinates: MAYOR altitud CONOCIDA es de 627 pies en las siguientes coordenadas: Geographic Coordinates: 12°53' S, 66°47' W, Grid de la Cuadrícula: 18Q 4074

ATTENTION: THIS CHART CONTAINS MAXIMUM ELEVATION FIGURES (MEF)

The Maximum Elevation Figures shown in quadrangles bounded by ticked lines of latitude and longitude are represented in THOUSANDS and HUNDREDS of feet above mean sea level. The MEF is based on information available concerning the highest known feature in each quadrangle, including terrain and obstructions (trees, towers, antennas, etc.).
EXAMPLE: 12500 feet

NOTES NOTAS

Power lines are shown except within populated place tints. Other obstructions are shown if they are 200 feet or more above ground level. See caution note. Se muestran las líneas de alta tensión con excepción de dentro de las zonas edificadas (zona roja). Se muestran otras obstrucciones si están a 200 pies o más sobre el nivel del terreno. Ver advertencia.

BOUNDARY REPRESENTATION IS NOT NECESSARILY AUTHORITATIVE LA REPRESENTACIÓN DE LIMITES NO DEBE CONSIDERARSE OFICIAL
On this graphic a lane is generally considered as being 8 feet (2.5 meters) in width. En este gráfico se considera que una vía tiene 8 pies (2.5 metros) de ancho.

NSN 7641014004655

NIMA REF. NO. 1501ASD1904