

SERIES 1501 AIR SHEET NJ 38-04 EDITION 5

POPULATED PLACES

Over 100,000	TEHRAN
50,000 to 100,000	XANKANDI
10,000 to 50,000	Ballica
2,000 to 10,000	Füzuli
Less than 2,000	Mollulu

ROADS

Dual Highway	4 LANES DUAL
All weather, hard surface	4 LANES
More than two lanes wide	
Two lanes wide	
One lane wide	
All weather, loose or light surface	3 LANES
More than two lanes wide	
Two lanes wide	
One lane wide	
Fair or dry weather, loose surface	
Cart tracks	
Footpath, trail	
Route marker	50

RAILROADS

Normal gauge, single track 1.44m (4'8 1/2) Double track	
Normal gauge, single track electrified	
Narrow gauge	

BOUNDARIES

International	
First order administrative division	

VEGETATION

Orchard or vineyard	
Woods	

HYDROGRAPHY

Perennial Lake	
Land subject to inundation	
Filtration bed; Marsh or swamp	
Perennial stream; Intermittent stream; Dam	
Canal; Perennial ditches; Intermittent ditch	

OTHER FEATURES

Mine	
Building; School; Church	
Well; Tank	
Pipeline; Water pipeline	
Mountain pass	
Bridge; Culvert	
Conveyer	
Distorted surface	

TERRAIN ELEVATIONS

Spot elevation, normal, critical

HIGHEST KNOWN elevation is 9247 feet at the following coordinates:

Geographic: 39°54'N, 46°31'E  
Grid: PK217

AERODROMES (Military or Civil)

EDNA/50's	
Runway pattern known	725
EDNA - Name	
50 - Length of the longest runway to nearest hundreds of feet	
S - Soft or unimproved surface	
4 - Unknown surface	
725 - Elevation	
Runway pattern unknown	

HELIPORT/HELIPAD

--	--

RADIO FACILITIES

VHF OMNI RANGE (VOR)	VOR with DME
VORTAC	Other Facilities
TACAN	

CONTROLLED AIRSPACE

IRAN ADIZ	
-----------	--

VISUAL AIDS AND OBSTRUCTIONS

Obstruction	1188 (259)
1188 - Elevation of obstruction top, above sea level	
(259) - Elevation of obstruction top, above ground level	
Group obstruction	
Radio facility obstruction	
Power transmission line	
Power transmission line obstruction	
Aero light, Marine light	

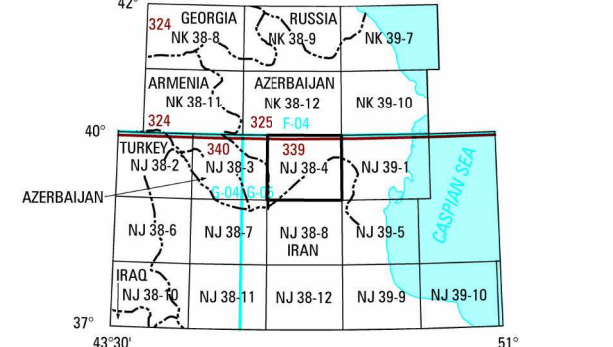
MAGNETIC VARIATION THROUGHOUT CHART AREA FOR 2005 IS APPROXIMATELY 5° EAST (Annual rate of change 5' increase)

ATTENTION

THIS CHART CONTAINS MAXIMUM ELEVATION FIGURES (MEF)

The Maximum Elevation Figures shown in quadrangles bounded by ticked lines of latitude and longitude are represented in THOUSANDS and HUNDREDS of feet above mean sea level. The MEF is based on information available concerning the highest known features in each quadrangle, including terrain and obstructions (trees, towers, antennas, etc.).

EXAMPLE: 12,500 feet **125**



SCALE 1:250,000

XANKANDI, AZERBAIJAN; ARMENIA; IRAN

SERIES 1501 AIR SHEET NJ 38-04 EDITION 5

Prepared and published by the National Geospatial Intelligence Agency

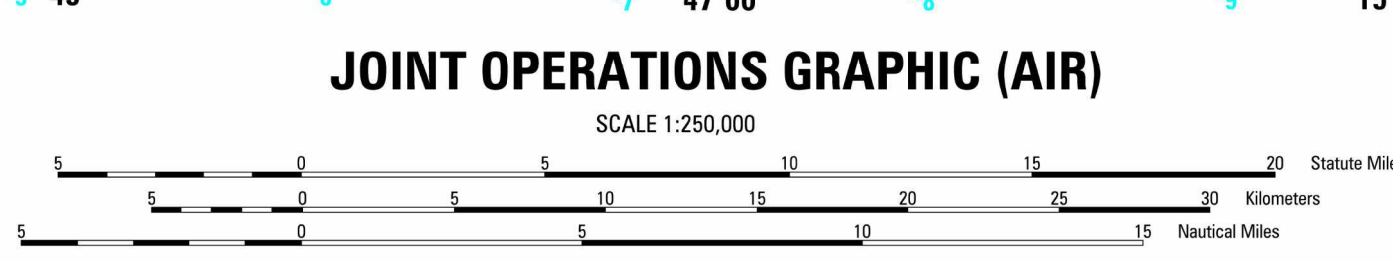
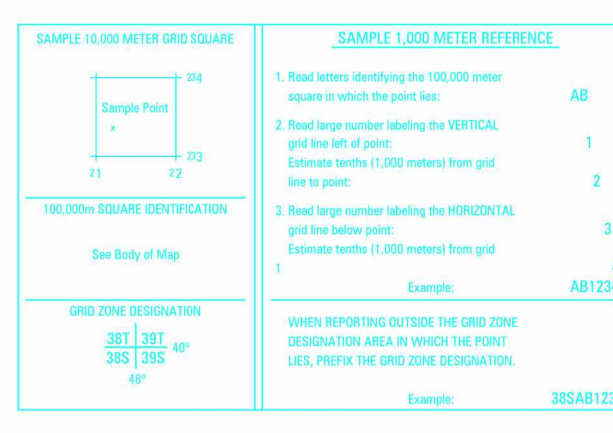
MAP INFORMATION AS OF 2003



COORDINATE CONVERSION WGS 84 TO EUROPEAN 1950 (EUR50)

Grid: Subtract 13m E, Subtract 5m N

Geographic: Subtract 0.6° Long, Subtract 0.1° Lat.



CONTOUR INTERVAL APPROXIMATELY 330 FEET

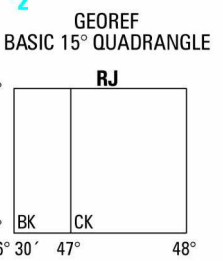
BLUE NUMBERED LINES INDICATE THE 10,000 METER UNIVERSAL TRANSVERSE MERCATOR GRID ZONE 38, UTM 48 ELLIPSOID

USERS SHOULD REFER TO CORRECTIONS, ADDITIONS, AND COMMENTS TO THE NGA ENTERPRISE SERVICE CENTER, 800-455-8892; COMMERCIAL: 314-263-8864; OR WRITE TO: DIRECTOR, NATIONAL GEOSPATIAL INTELLIGENCE AGENCY, ATTN: ES, MAIL STOP L-88, 4600 SANGAMORE ROAD, BETHESDA, MD 20816-5003

© COPYRIGHT 2007 BY THE UNITED STATES GOVERNMENT  
NO COPYRIGHT CLAIMED UNDER TITLE 17 U.S.C.

GLOSSARY

Ajir	first-order administrative division
Agula	stream, intermittent stream
Chay	stream
Dud	hill, mountain
Diz	plains
Diz	mountain
Gil	lake
Gil	canal
Kanal	canalized stream
Mery	first-order administrative division
Qapan	first-order administrative division
Qashq	nature reserve
Ravyn	first-order administrative division
Ravyn	rainbow siding
Rid	mountains
Shalax	farm
Sovox	stream
Staryax	railroad station
Staryax	railroad station
Su Anbar	reservoir(s)
Su	stream
Tapa	mountain
Yalyax	railroad siding
Zind	peak



ELEVATION TINTS

8850	FEET
2650	
2550	
1999	
660	
330	
BSL	

RELIABILITY OF THIS GRAPHIC (as determined by standard practices)

2004	2003
------	------

PLOTTING ACCURACY 90% ASSURANCE

Horizontal	within 1084 ft.
Contours	within 199 ft.

GRAPHIC FEATURE DATE OF INFORMATION

All features: See diagram

Horizontal Datum: WORLD GEODETIC SYSTEM 1984  
Vertical Datum: MEAN SEA LEVEL  
Transverse Mercator Projection

NOTES

Powertines are shown except within populated places tint.

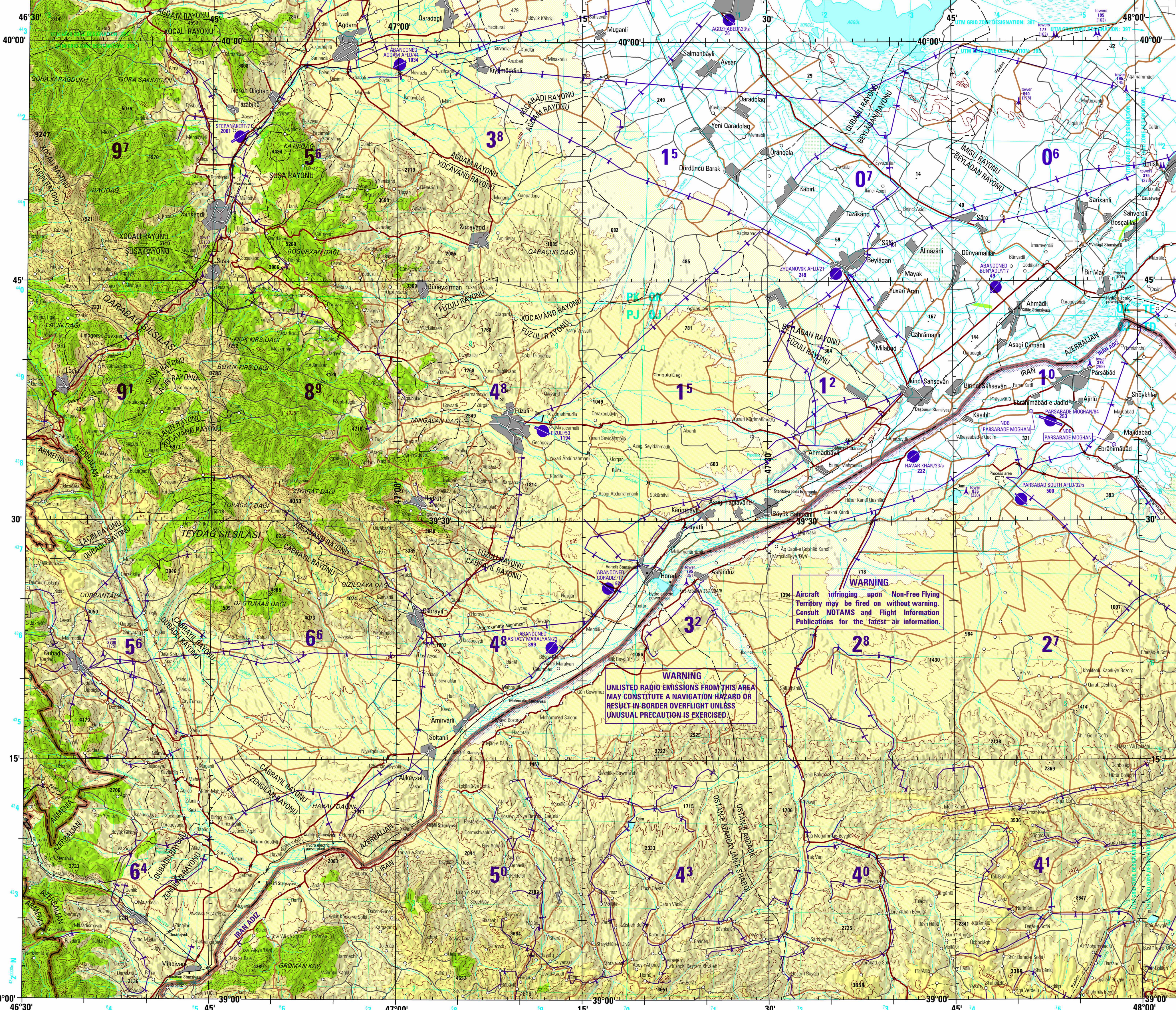
Other obstructions are shown if they are 150 feet or more above ground level. See caution note.

Boundary representation is not necessarily authoritative.

On this graphic a lane is considered to be 8 feet (2.5 meters) in width.

Printed by NGA 03-07

NSN 7641014103469  
NGA Ref No: 1501ANJ3804



WARNING

Aircraft infringing upon Non-Free Flying Territory may be fired on without warning. Consult NOTAMS and Flight Information Publications for the latest air information.

WARNING

UNLISTED RADIO EMISSIONS FROM THIS AREA MAY CONSTITUTE A NAVIGATION HAZARD OR RESULT IN BORDER OVERFLIGHT UNLESS UNUSUAL PRECAUTION IS EXERCISED.

CAUTION

Vertical obstructions, including powertines, have been extracted from the most reliable sources available. However, there is no assurance that all are shown, or that their locations or heights are exact.

CAUTION

AIR INFORMATION CURRENT THROUGH 7 DECEMBER 2006

Consult NOTAMS and Flight Information Publications for the latest air information; the NGA Aeronautical Chart Updating Manual or MOD (U.K.) Aeronautical Chart Amendment document, for other chart revision information.